

Mobile Pedestal - 25.5'' Height x 15.7'' Width x 19.6'' Depth

WOMA



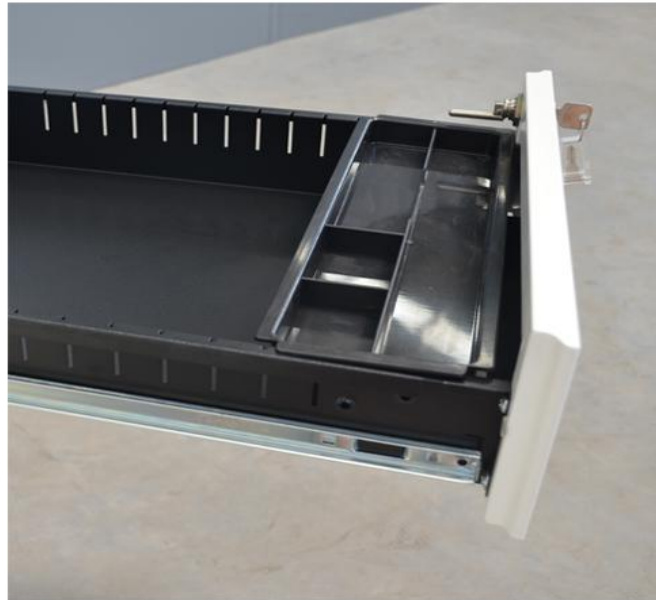
Brand name	WOMA Mobile Pedestal		
Item No.	W-M32		
Material	High quality cold rolled steel sheet Q235		
Steel thickness (mm)	0.6	0.7	
Item weight (kg)	20	23	
Size (mm)	H650*W400*D500		
Packing size (mm)	630*430*530		
Surface	Durable electrostatic powder coating		
Loading capacity	20GP	40GP	40HQ
	194	388	472

Mobile Pedestal - 25.5'' Height x 15.7'' Width x 19.6'' Depth

Detail



www.wmsteelfurniture.com



Contact: woma@lysteelfurniture.com